

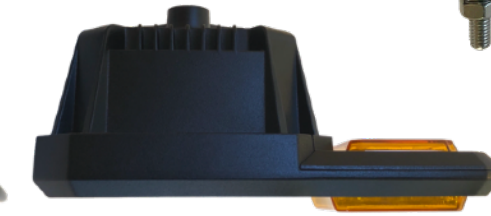
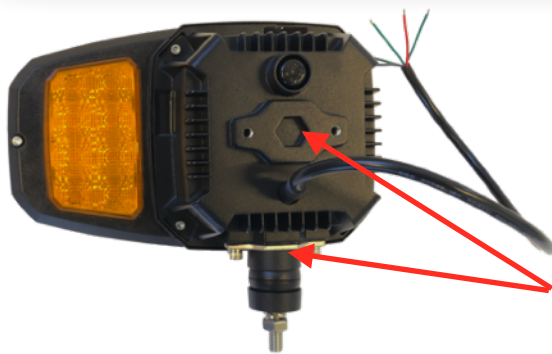
# HEADLIGHT LED 259x164mm

- REACH compliant
- Optional Snow Melting function

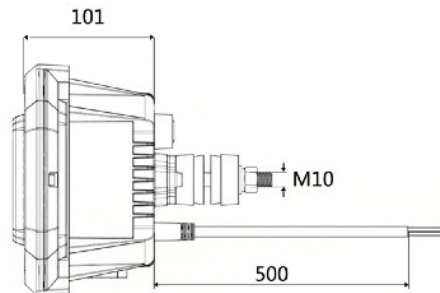
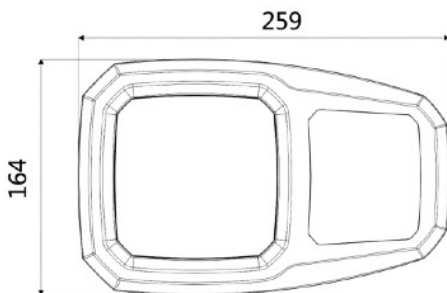
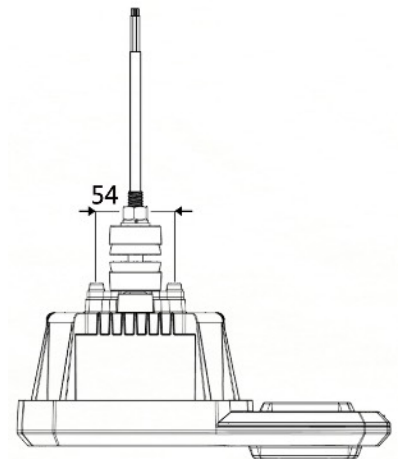


## FEATURES:

- Voltage: 10-30V
- Functions: Low beam / High beam / Position / Front and rear direction indicator
- Housing/Lens: ADC12/PC
- Warranty: 3 years
- Approvals: ECE R10, R7, R6, R112
- Ingress protection (IP rating): IP67
- Operating temperature: from -40°C to +65°C
- Connection: Deutsch connector



Two mounting options



PART NUMBER	POSITION	VOLTAGE	FUNCTION	POWER	LUMEN	APPROVALS	IP RATING
EHL50511	LEFT	10-30V	LOW BEAM	16W	1100Lm	ECE	IP67
EHL50521	RIGHT		HIGH BEAM	16,5W	1100Lm		
			POSITION	2,5W	360Lm		
			FRONT DIRECTION	8W	600Lm		
			REAR DIRECTION	2W	160Lm		
			SNOW MELTING (optional)	20W	/		